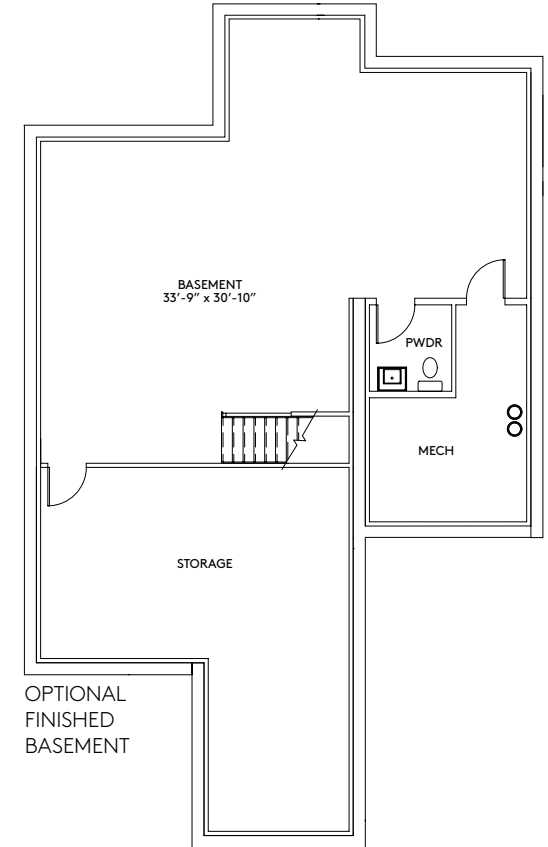
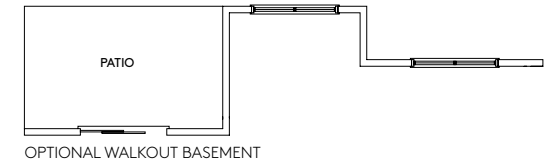
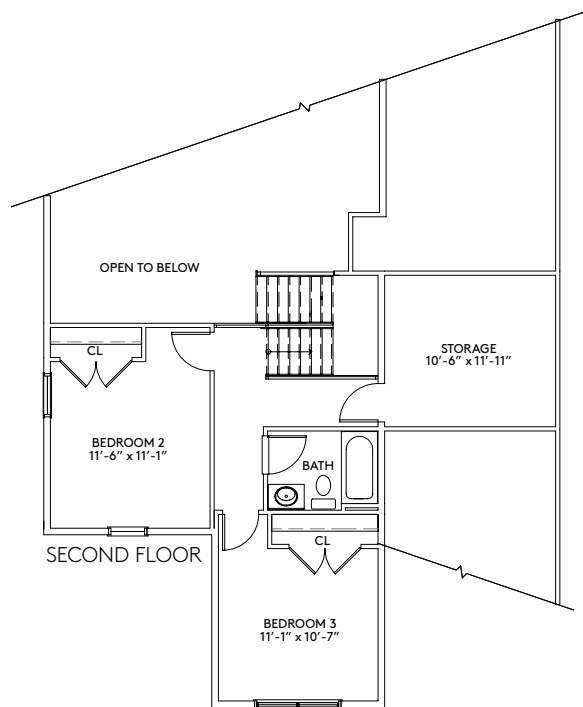
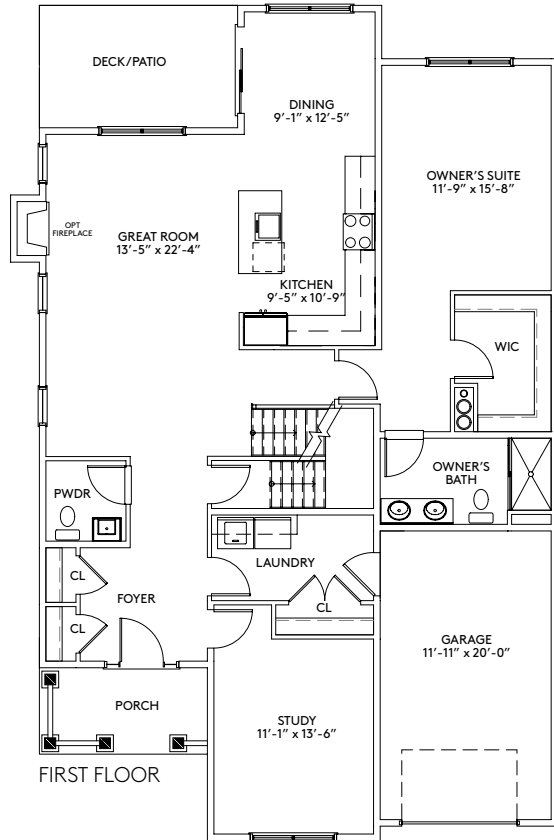




# RIVER RIDGE

*at Hyde Park*



## THE OAK

1,992 Sq. Ft. | 3 Bedrooms | 2.5 Baths | 1-Car Garage | Basement

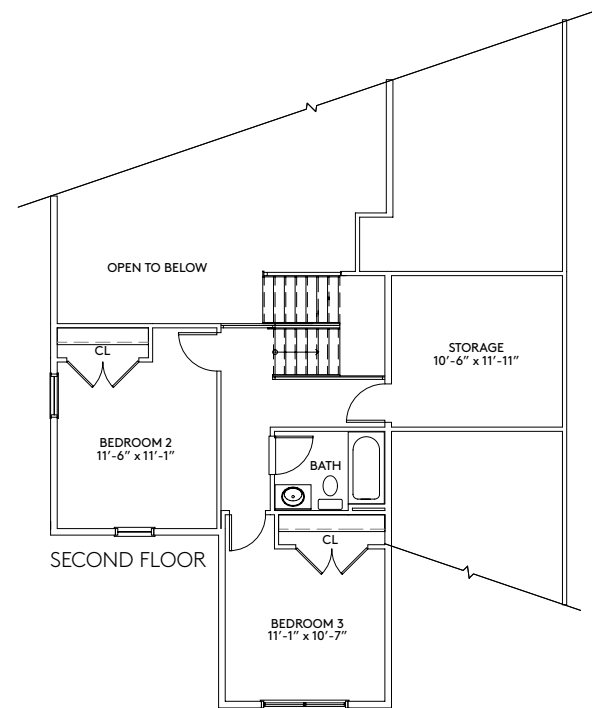
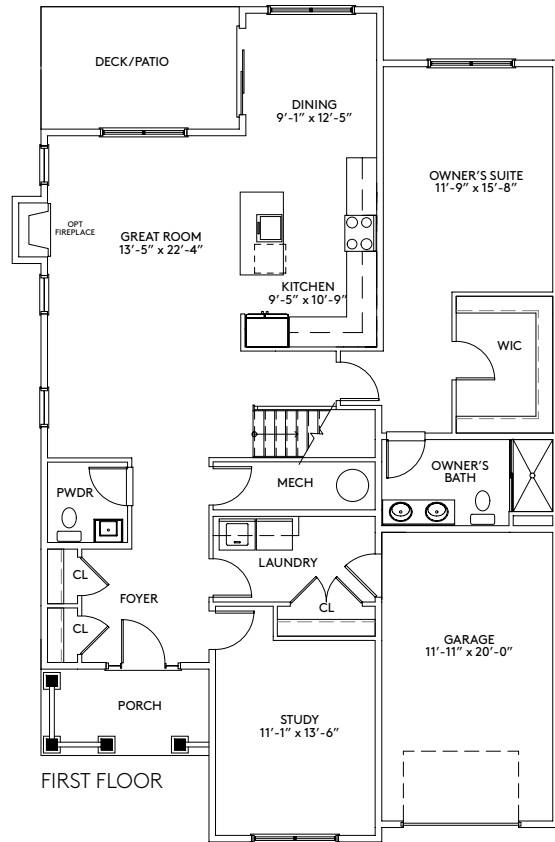
The renderings depicted in this brochure represent an artist's concept of current development and design. The renderings are not intended to show specific details. We reserve the right to make modifications or changes without notice or obligation to the floor plan, site plan, landscape plan, house location or orientation map, or any of the features, options or designs shown. Any and all dimensions referenced herein including lot size are approximate. Options shown are offered for an additional cost. Please see your sales consultant for specific details regarding the elevations, plans, pricing, dimensions, specifications, or products offered in the community. This material shall not constitute a valid offer in any state where prior registration is required or void by law. ©2023 Fleet Hype Park LLC. All rights reserved. 05/23





# RIVER RIDGE

*at Hyde Park*



## THE OAK

1,992 Sq. Ft. | 3 Bedrooms | 2.5 Baths | 1-Car Garage

The renderings depicted in this brochure represent an artist's concept of current development and design. The renderings are not intended to show specific details. We reserve the right to make modifications or changes without notice or obligation to the floor plan, site plan, landscape plan, house location or orientation map, or any of the features, options or designs shown. Any and all dimensions referenced herein including lot size are approximate. Options shown are offered for an additional cost. Please see your sales consultant for specific details regarding the elevations, plans, pricing, dimensions, specifications, or products offered in the community. This material shall not constitute a valid offer in any state where prior registration is required or void by law. ©2023 Fleet Hype Park LLC. All rights reserved. 05/23

